



HICAPS

terminal service setup

Table of Contents

Installing HICAPS Connect3

HICAPS Connect6

Firewall setting for the Terminal Services Server11

Warning: You acknowledge and agree that any use of the information contained in this document by you is solely at your risk and that HICAPS Pty Ltd is not responsible or liable for any loss or damage you suffer (including indirect or consequential loss) as a result of that. HICAPS makes no representations or warranties about the suitability, reliability or accuracy of the information contained in this document.

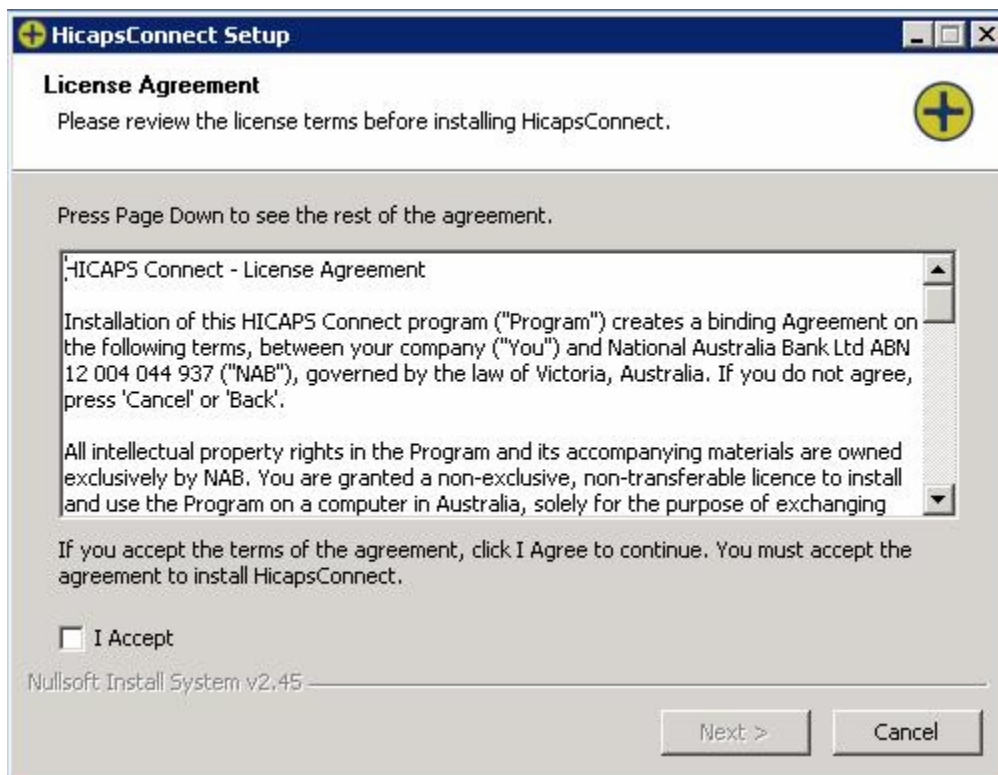
Installing HICAPS Connect

HICAPS Connect will need to be installed on the Windows Terminal Services Server. The HICAPS Connect Service Controller will be placed in the All Users start up folder negating the need for HICAPS Connect to be installed in each Terminal Service Session.

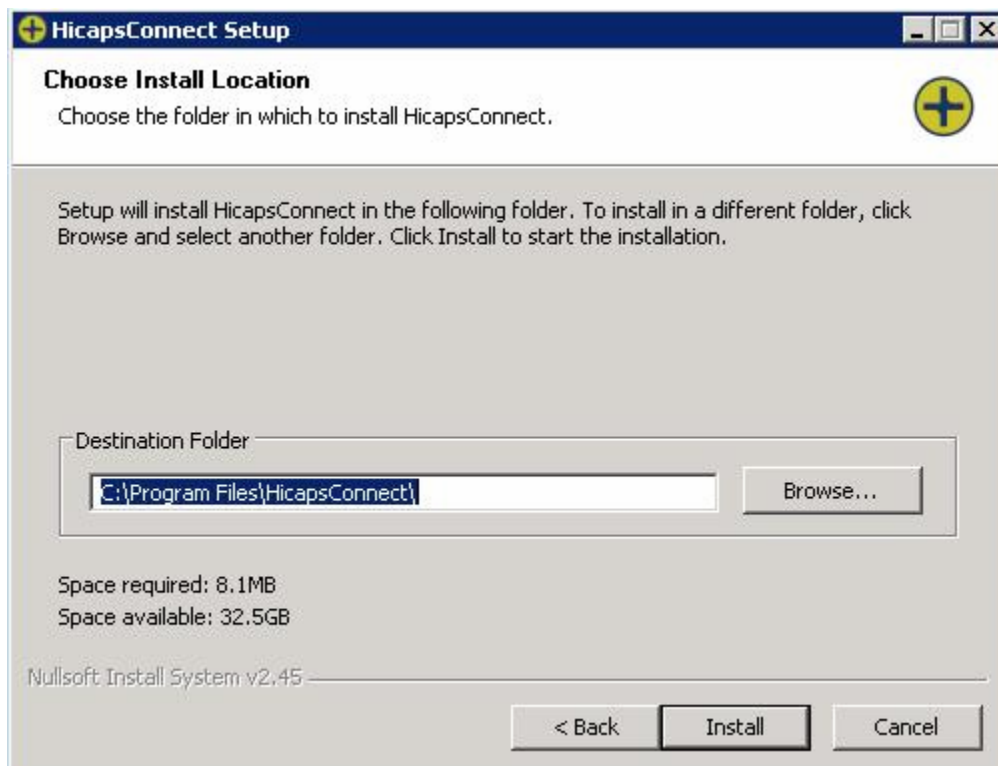
Note : Windows Terminal Services will not let you install an application from a LAN drive, so you may be required to copy the application locally on to the server then run the HICAPS Connect install.



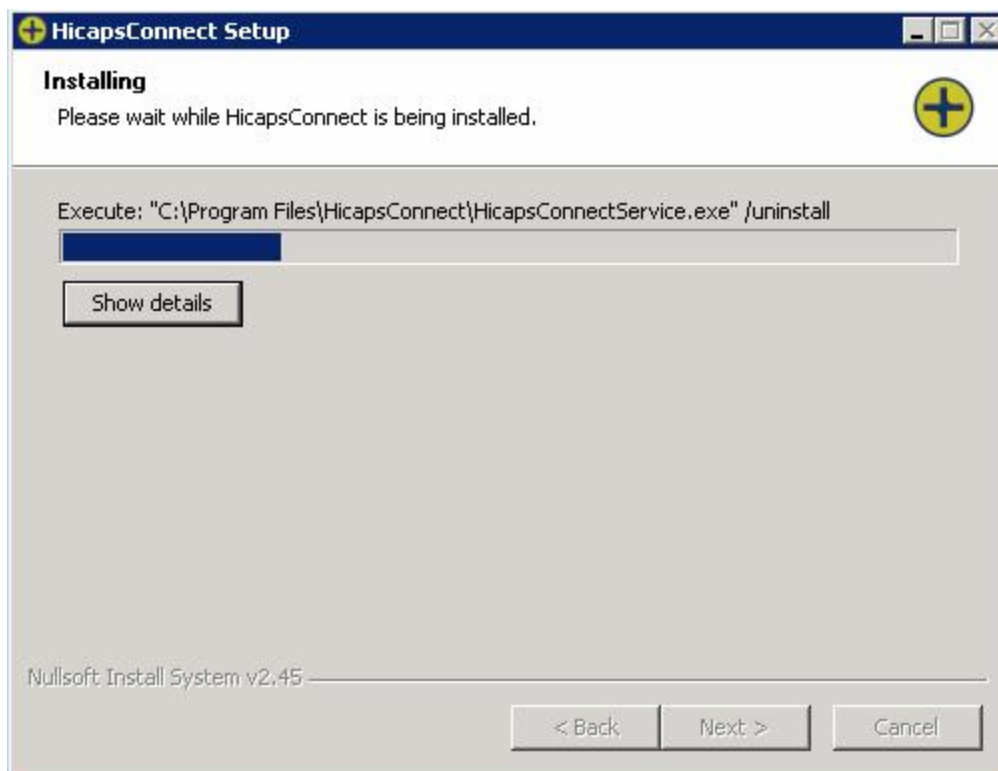
You will need to load the HICAPS Connect application under an administrator user



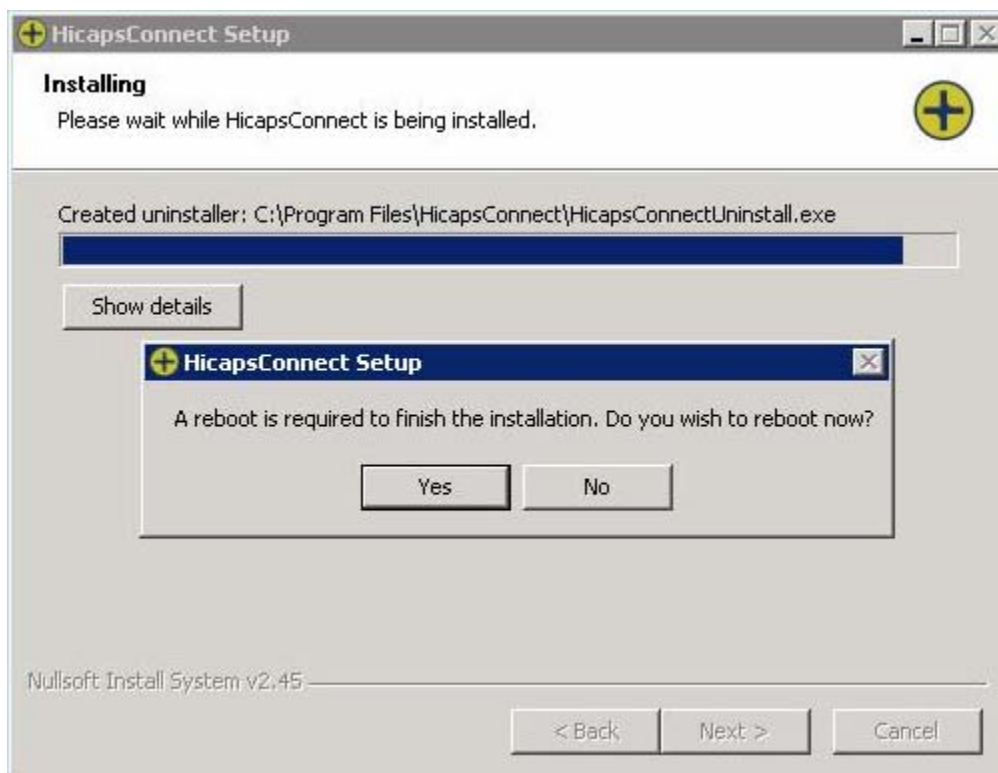
Please review the EULA and select the I Accept check box if you agree and select next



Select the directory where you would like the application installed and select Install



HICAPS Connect will install in your chosen directory



When HICAPS Connect has finished installing it will require a reboot.

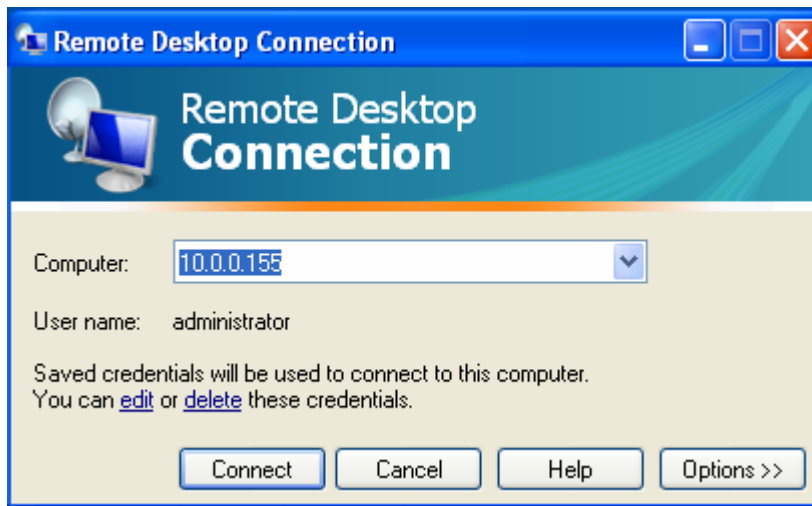
Note : This will reboot the Windows Terminal Services Server.

HICAPS Connect

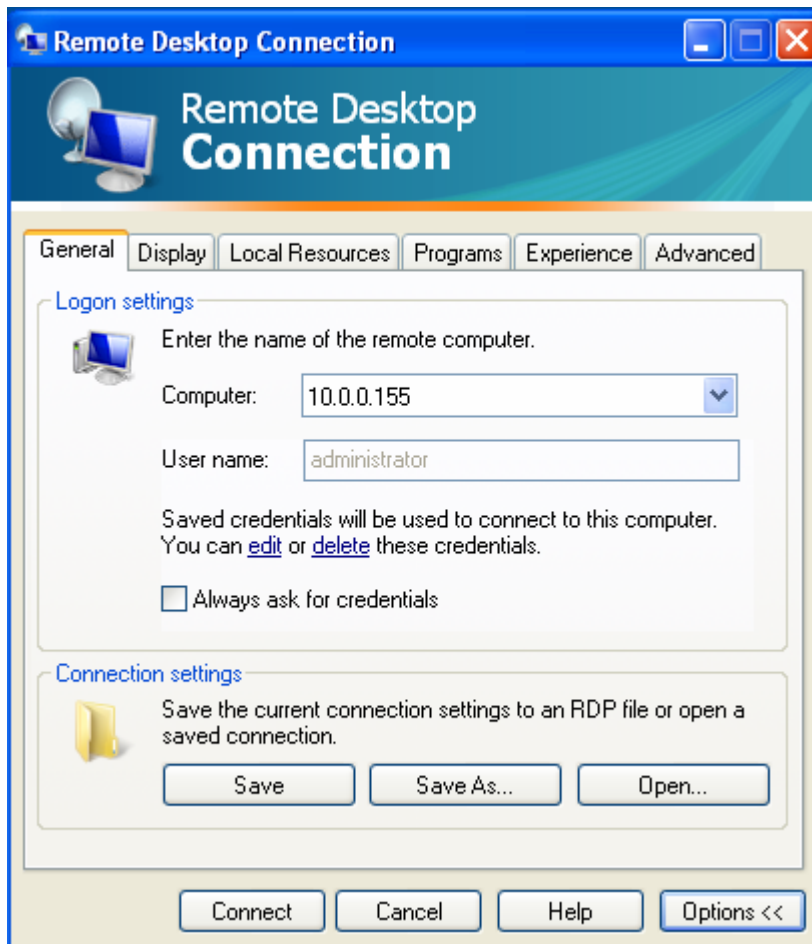
Open Remote Desktop Connection

To open Remote Desktop Connection, click **Start**, point to **All Programs**, point to **Accessories**, point to **Communications**, and then click **Remote Desktop Connection**

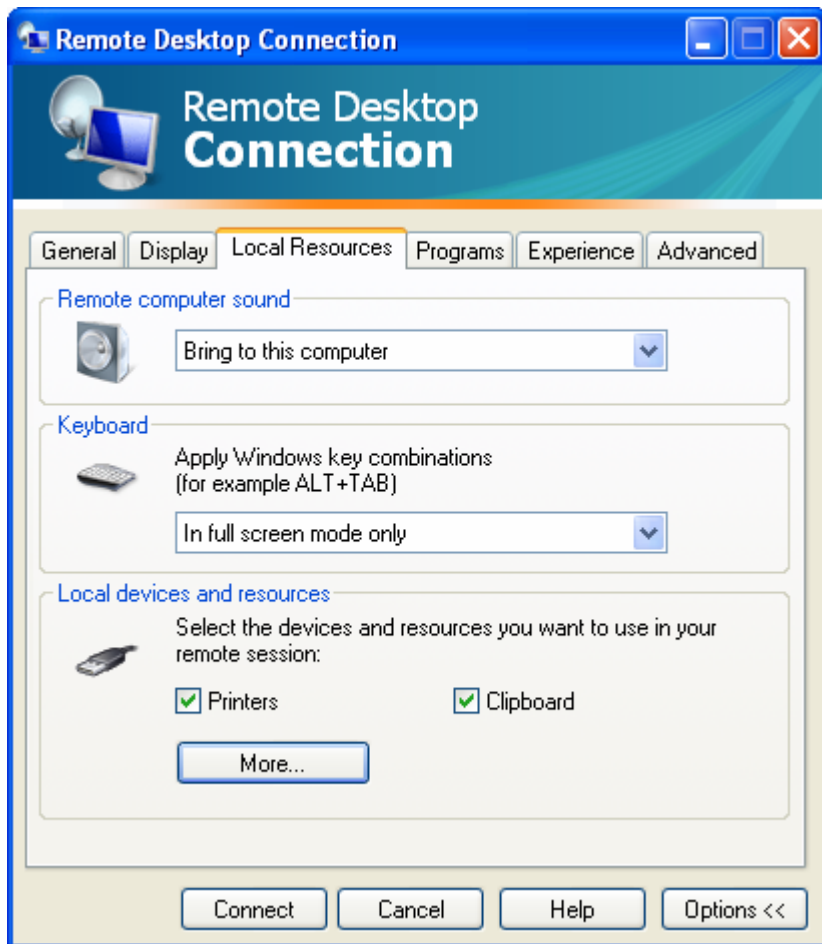
Enter the Server name or TCP/IP address in the "Computer" list box.



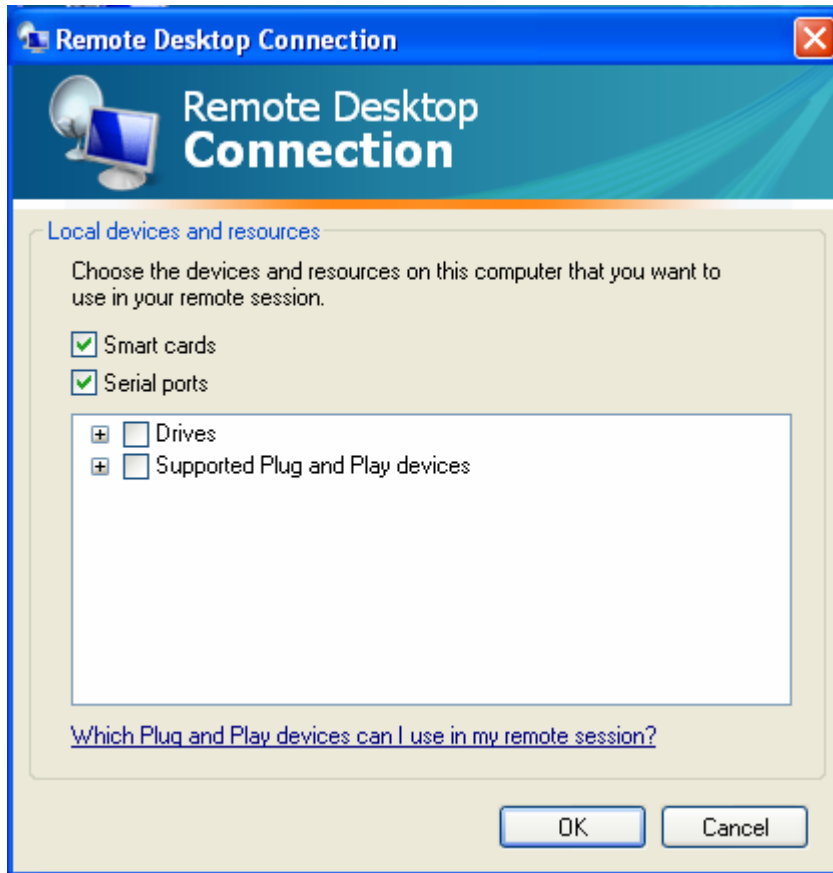
Select the “**Local Resources**” tab.



In the “ **Local devices and resources**” area select the “**More**” button.



Select the **“serial ports”** check box and then click **“OK”**.

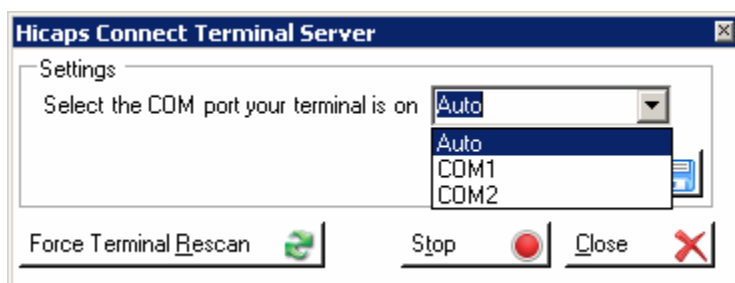


In the **Remote Desktop Connection** dialog box click **Connect**.

In the **Log On to Windows** dialog box, type your user name, password, and domain (if necessary), and then click **OK**.

This should start a Remote Desktop session window.

Then you can **“Start” – “All Programs” – “HicapsConnect” – “HicapsConnectServiceController”**.



Use a “Run” – “cmd” window on the server to issue a “**change port /query**” command to check the mapping of the local serial ports to the ports on the Terminal Server session. The “**change port comx=comy**” can be used to assign/reassign the port mappings.

```
E:\WINDOWS\system32\cmd.exe

CHANGE PORT [portx=porty ! /D portx ! /QUERY]

    portx=porty    Map port x to port y.
    /D portx       Delete mapping for port x.
    /QUERY         Display current mapping ports.

E:\Documents and Settings\Administrator>change port /query
AUX = \DosDevices\COM1
COM1 = \Device\RdpDrPort\;COM1:1\tscclient\COM1
COM10 = \Device\RdpDrPort\;COM10:1\tscclient\COM10
COM11 = \Device\RdpDrPort\;COM11:1\tscclient\COM11
COM12 = \Device\RdpDrPort\;COM12:1\tscclient\COM12
COM13 = \Device\RdpDrPort\;COM13:1\tscclient\COM13
COM14 = \Device\RdpDrPort\;COM14:1\tscclient\COM14
COM15 = \Device\RdpDrPort\;COM15:1\tscclient\COM15
COM16 = \Device\RdpDrPort\;COM16:1\tscclient\COM16
COM17 = \Device\RdpDrPort\;COM17:1\tscclient\COM17
COM18 = \Device\RdpDrPort\;COM18:1\tscclient\COM18
COM2 = \Device\RdpDrPort\;COM2:1\tscclient\COM2
COM4 = \Device\RdpDrPort\;COM4:1\tscclient\COM4
COM5 = \Device\RdpDrPort\;COM5:1\tscclient\COM5
COM6 = \Device\RdpDrPort\;COM6:1\tscclient\COM6
COM7 = \Device\RdpDrPort\;COM7:1\tscclient\COM7
COM8 = \Device\RdpDrPort\;COM8:1\tscclient\COM8
COM9 = \Device\RdpDrPort\;COM9:1\tscclient\COM9
LPT1 = \Device\RdpDrPort\;LPT1:1\tscclient\LPT1
PRN = \DosDevices\LPT1
```

Firewall setting for the Terminal Services Server

If you are running a firewall on your server you may need to open ports through the firewall to allow the 2 programs (your PMS Software and HICAPS Connect) to talk to each other.

As there are many different types of firewalls and brands we cannot explain the process for opening ports for all of them. We recommend that you consult your user guide or help file about the firewall on your particular system.

Port Exceptions :

TCP Ports 11000 through to 11099

UDP Port 11001

Warning: Allowing ports to run through your firewall may result in damage to your computer, network, software and stored data. You acknowledge and agree that any use of the information contained in this document by you and any opening of ports on your system is solely at your risk and that HICAPS Pty Ltd is not responsible or liable for any loss or damage you suffer (including indirect or consequential loss) as a result of that. HICAPS makes no representations or warranties about the suitability, reliability or accuracy of the information contained in this document.