



Practice Management Systems Technical Specifications - Hyperlane Port Exceptions

Hyperlane is an application that allows your Practice Management Systems (PMS) software to communicate with the HICAPS terminal.

If you are running a firewall on your computer you may need to open ports through the firewall to allow the 2 programs (your PMS Software and Hyperlane) to communicate with each other.

As there are many different types of firewalls and brands we cannot explain the process for opening ports for all of them. We recommend that you consult your user guide or help file about the firewall on your particular system. In this case, we are walking through the process for the Windows XP (SP2) firewall.

Exception Setting

It is recommended that you allow the following ports even if the Terminal is standalone (Not Network Connected).

**Hyperlane – TCP 11000
TCP - 11000**

**Hyperlane – UDP 11000
UDP – 11000**

**Hyperlane – UDP 11001
UDP - 11001**

It is also suggested that you restrict these open ports to the local subnet.

Warning

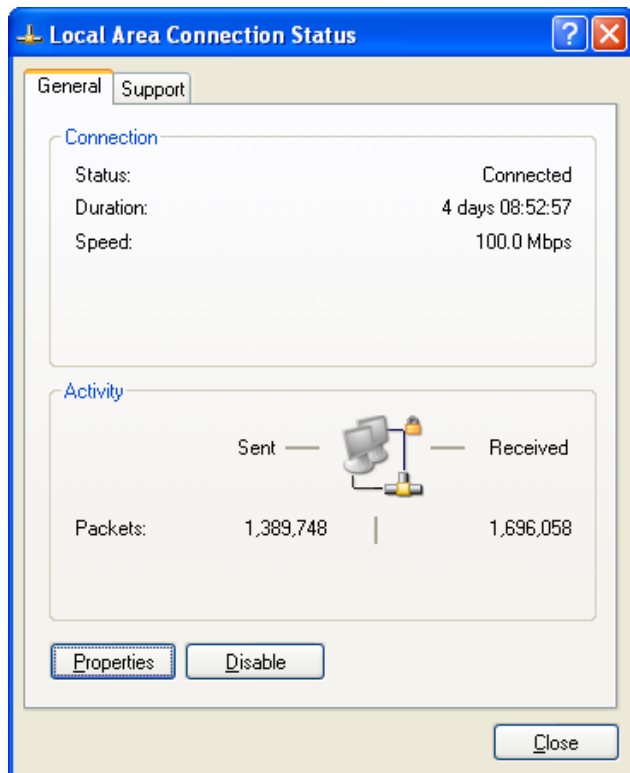
Allowing ports to run through your firewall may result in damage to your computer, network, software and stored data. You acknowledge and agree that any use of the information contained in this document by you and any opening of ports on your system is solely at your risk and that HICAPS Pty Ltd is not responsible or liable for any loss or damage you suffer (including indirect or consequential loss) as a result of that. HICAPS makes no representations or warranties about the suitability, reliability or accuracy of the information contained in this document.

Opening Ports on Microsoft Windows XP Service Pack 2

Attached is a description on how to open ports for Microsoft Windows running Service Pack 2

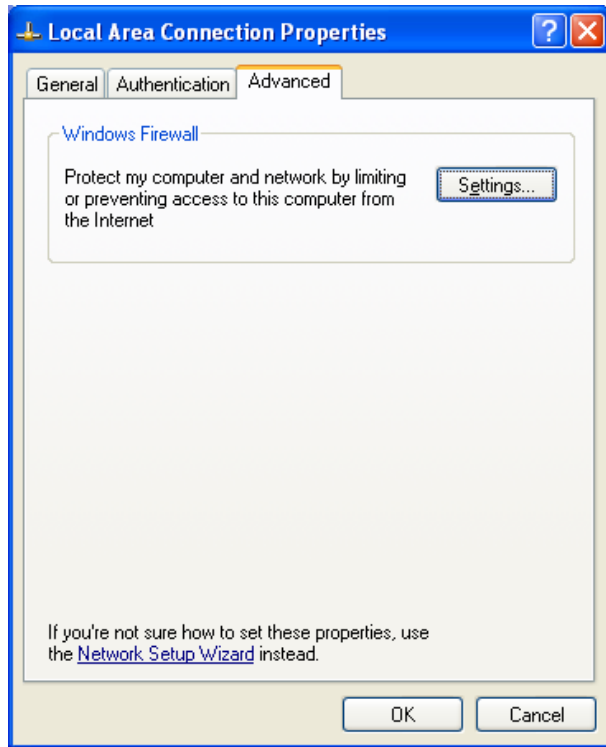
Select the following

Start – Control Panel – Network Connections – Local Area Connection

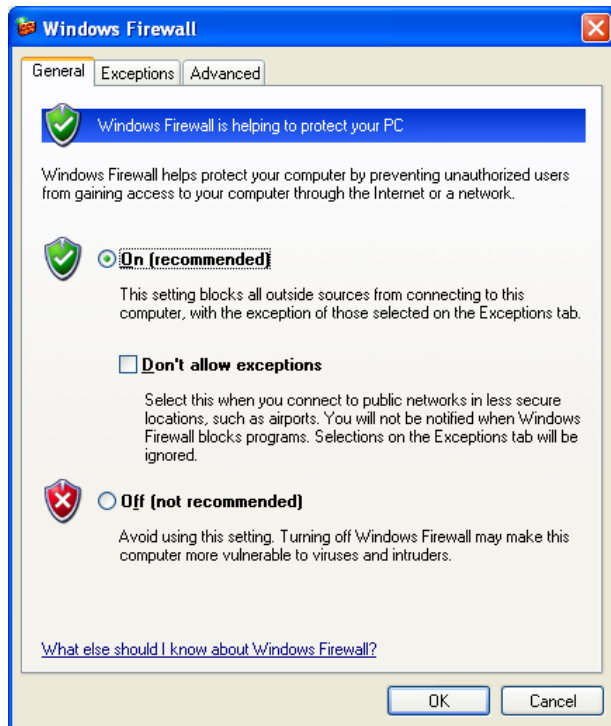


Then left click on the **Properties** button

Opening Ports on Microsoft Windows XP Service Pack 2

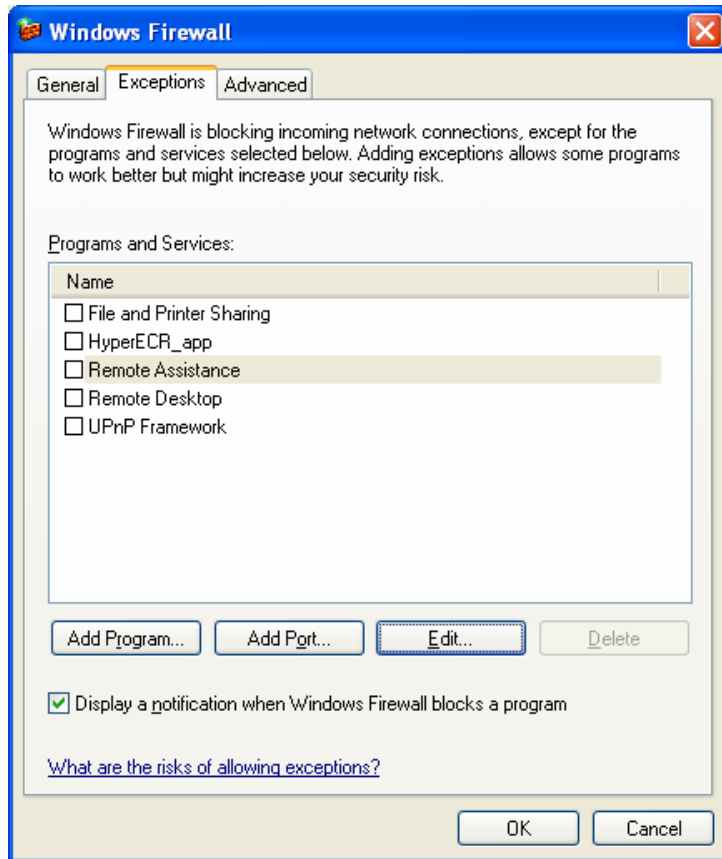


Select the **Advanced** Tab
Then left click on the **Settings** button



Select the **Exceptions** Tab

Opening Ports on Microsoft Windows XP Service Pack 2



Then left click on the **Add Port...** button

For more information relating to exceptions
Click on the link – “What are the risks of allowing exceptions” in the Exceptions TAB

Opening Ports on Microsoft Windows XP Service Pack 2

Add a Port

Use these settings to open a port through Windows Firewall. To find the port number and protocol, consult the documentation for the program or service you want to use.

Name:

Port number:

TCP UDP

[What are the risks of opening a port?](#)

Type Name = Hyperlane – TCP 11000

Port number = 11000

Click on the radio button **TCP**

The Click on **Change scope...**

Change Scope

To specify the set of computers for which this port or program is unblocked, click an option below.

To specify a custom list, type a list of IP addresses, subnets, or both, separated by commas.

Any computer (including those on the Internet)

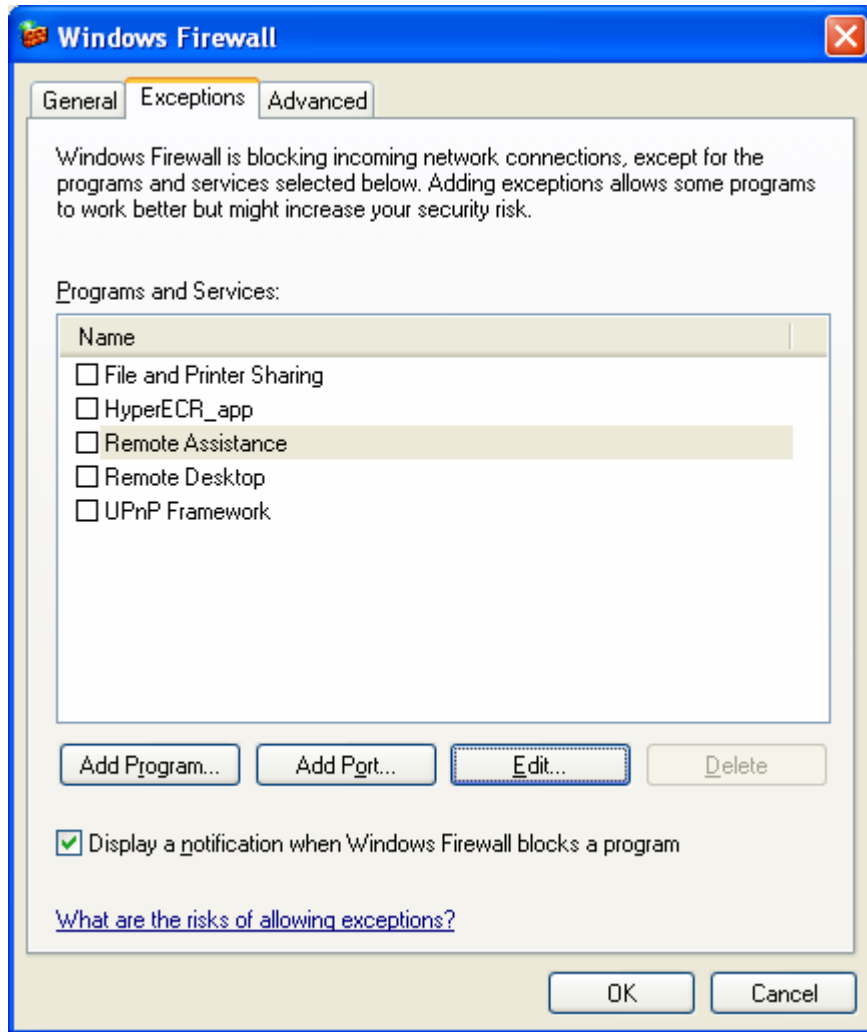
My network (subnet) only

Custom list:

Example: 192.168.114.201,192.168.114.201/255.255.255.0

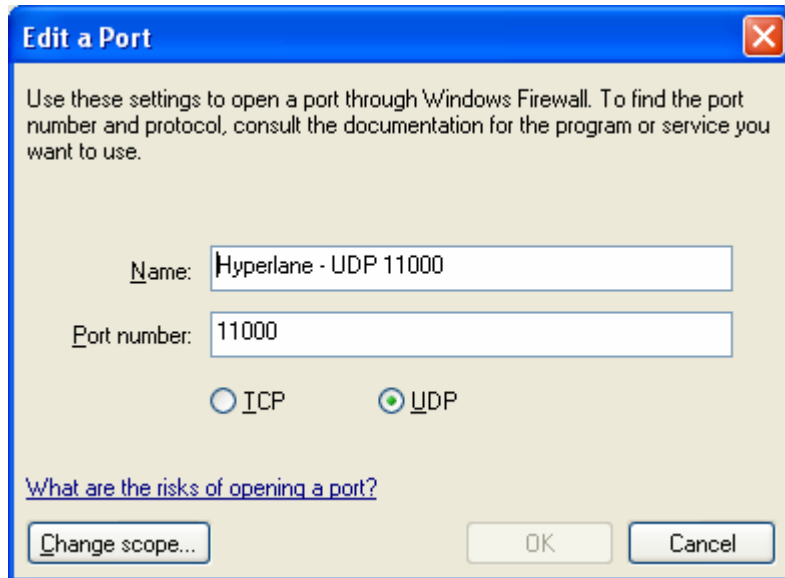
Click on the radio button **My network (subnet) only**

Opening Ports on Microsoft Windows XP Service Pack 2



Then left click on the **Add Port...** button

Opening Ports on Microsoft Windows XP Service Pack 2

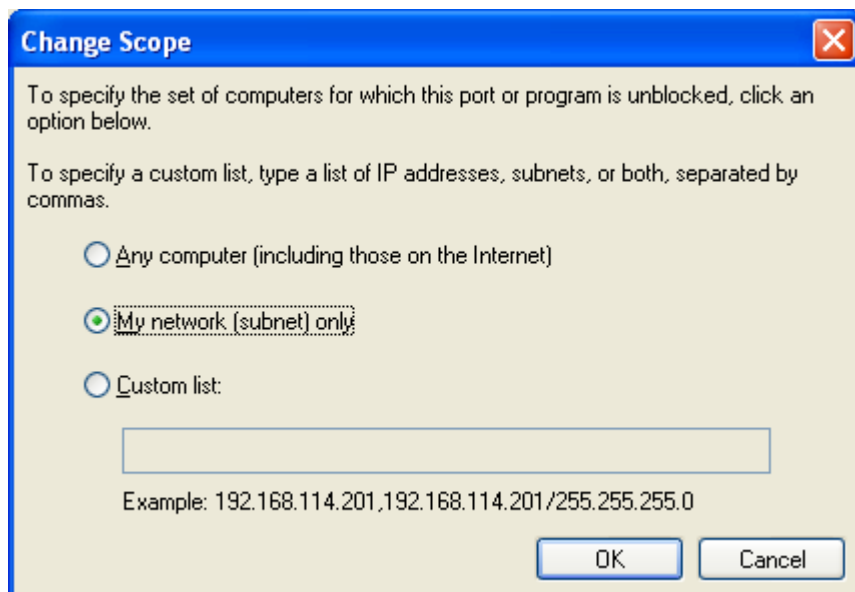


Type Name = Hyperlane – UDP 11000

Port number = 11000

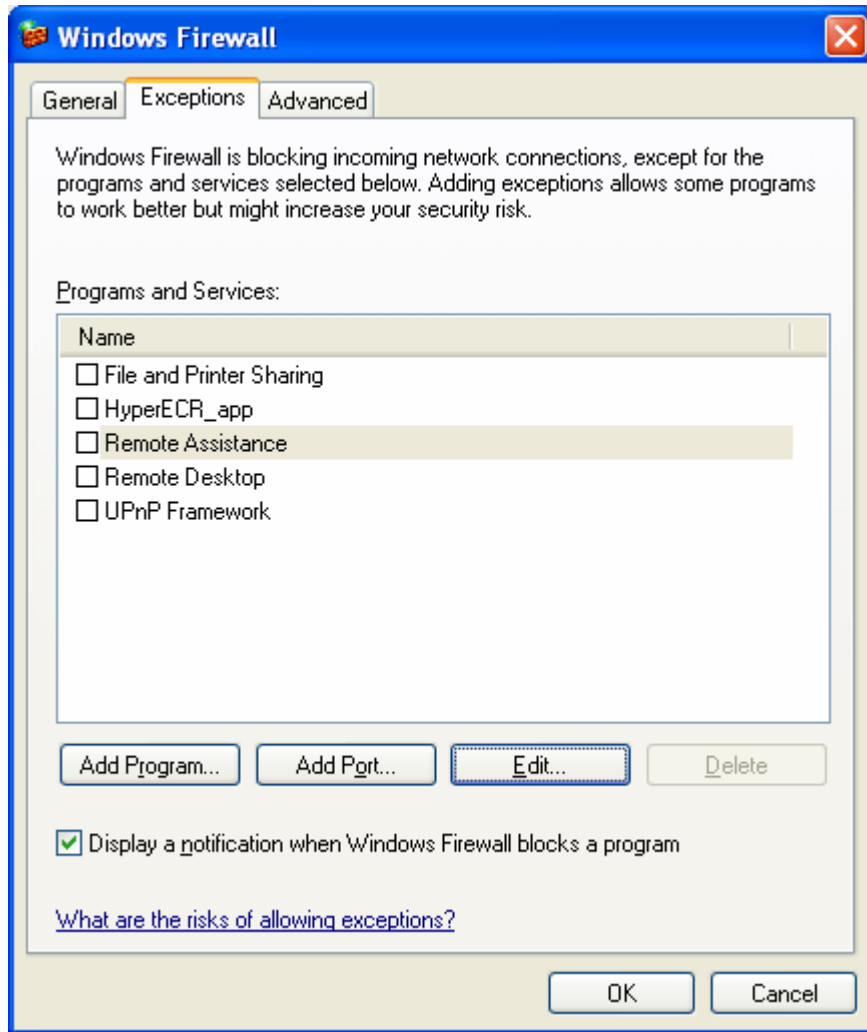
Click on the radio button **UDP**

The Click on **Change scope...**



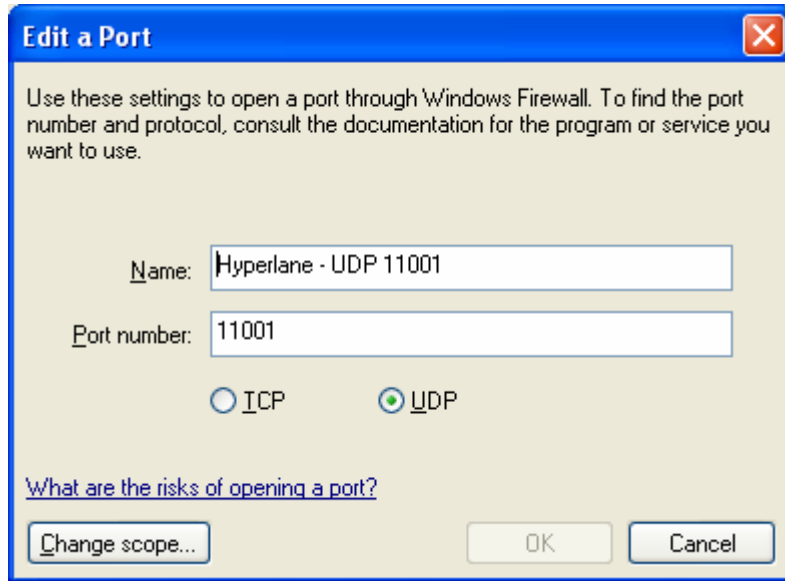
Click on the radio button **My network (subnet) only**

Opening Ports on Microsoft Windows XP Service Pack 2



Then left click on the **Add Port...** button

Opening Ports on Microsoft Windows XP Service Pack 2

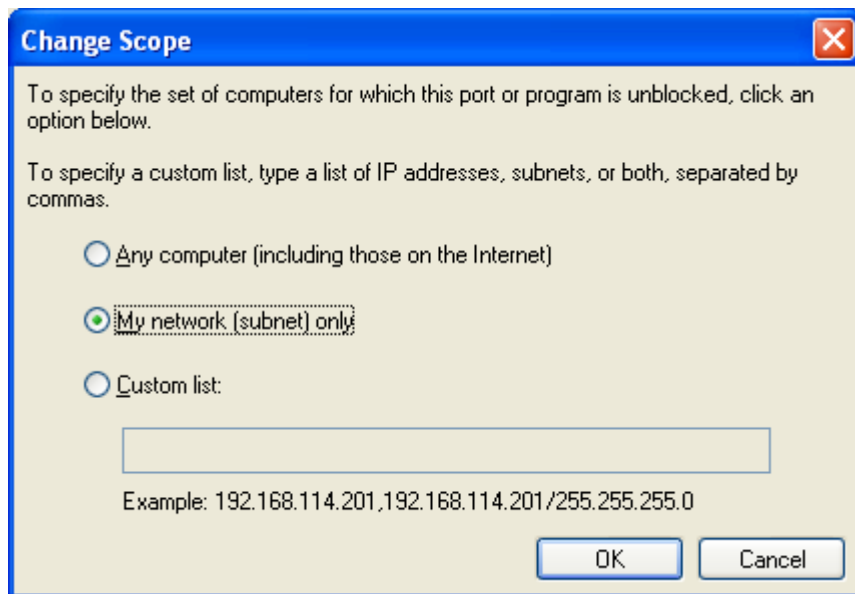


Type Name = Hyperlane – UDP 11001

Port number = 11001

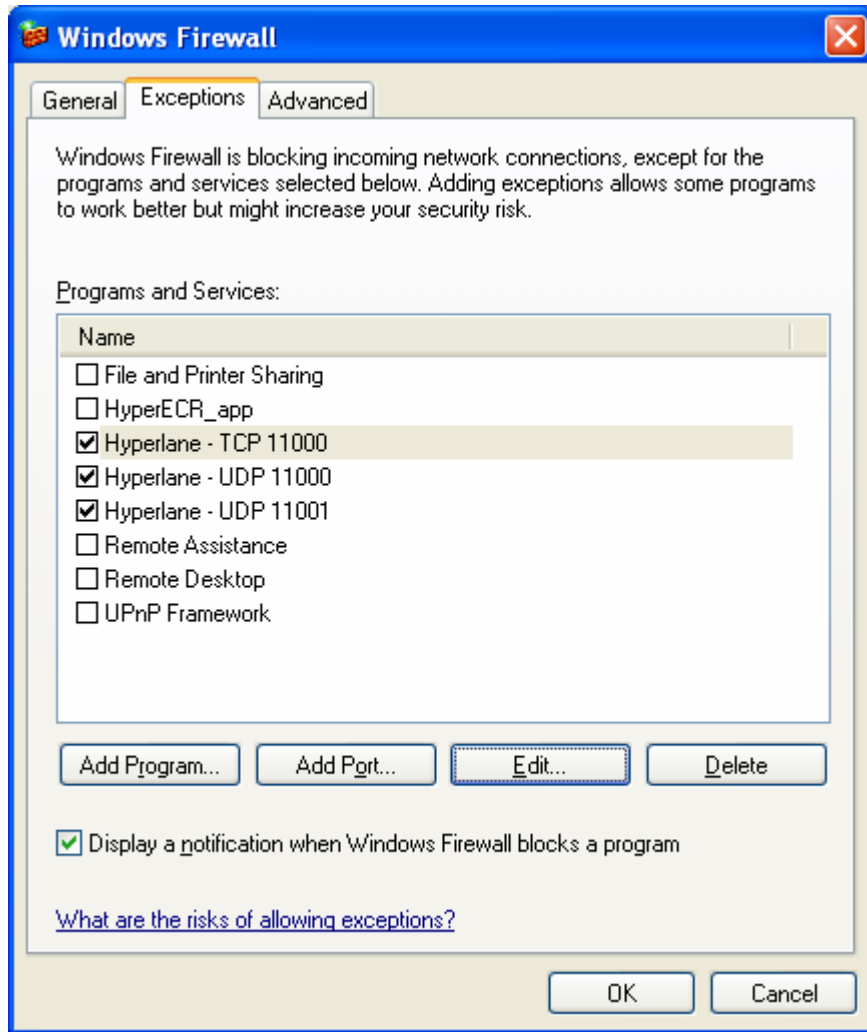
Click on the radio button **UDP**

The Click on **Change scope...**



Click on the radio button **My network (subnet) only**

Opening Ports on Microsoft Windows XP Service Pack 2



Hyperlane should now function with your select Practice Management System.